



A conference dedicated to geoscience, exploration, licence to operate and the future of graphite sourcing in Europe (and beyond)!

GeoSphere Austria, Neulinggasse 38, 1030 Wien/Vienna

*Registration for Symposium (free of charge):*

<https://form.jotform.com/243454186981062>



## *Program preliminary version 8.4.2025*

### *Symposium (Thursday, 15. May 2025)*

- |       |   |
|-------|---|
| 09:00 | Registration and coffee   |
| 10:00 | Welcome address   |
| 10:10 | Navigating the Graphite supply chain – Industry trends, challenges and market insights<br>Sophie Damm, German Mineral Resources Agency (DERA) |
| 10:30 | The rise of Graphite as a Critical Raw Material: A historical overview<br>Simon Lobach, Geneva Graduate Institute                             |
| 10:50 | Graphite exploration of Norway: A successful integration of geology and geophysics<br>Håvard Gautneb, Geological Survey of Norway             |
| 11:10 | New developments in geophysical Graphite exploration<br>Adrian Flores-Orozco, TU Wien   |
| 11:30 | Discussion  |
| 12:00 | Lunch and posters (Foyer, Neulinggasse)   |

*Program continued*

- 13:30            **Global natural graphite supply – a reason to worry?**  
Leopold Weber, World Mining Congresses
- 13:50            **Graphite potential in Greenland**  
Diogo Rosa, Geological Survey of Denmark and Greenland
- 14:10            **Mapping the Interplay between Corporate Social Responsibility, Social License to Operate and Social Acceptability in Mining Projects**  
Thierry Rodon, Université Laval
- 14:30            **How to fingerprint natural graphite?**  
Róbert Arató, Montanuniversität Leoben
- 14:50            Coffee break
- 15:20            **Graphite: from mine to market – a journey through the AMG Graphite value chain**  
Solveig Neunzert / Alexander Unfried, AMG - Graphit Kropfmühl GmbH
- 15:40            **Graphite deposits of the Český Krumlov Varied Group, Moldanubian Domain, southern Bohemia: Their origin, paleoenvironment of their formation, geotectonic setting and metamorphic evolution**  
Bohdan Kříbek, Czech geological Survey
- 16:00            **Assessment of Graphite Deposits in Austria: Geophysical Investigations and Resource Evaluation (PotGraf)**  
Alexander Römer et al., GeoSphere Austria
- 16:20            Discussion (or presentation t.b.a.)
- 16:40            Drinks and posters
- 17:45            **Public evening lecture on Critical Raw Materials (t.b.a. in German or English)**
- 18:45            End of Symposium
- 19:30            Dinner, Heurigen Restaurant (t.b.a.), at own expense

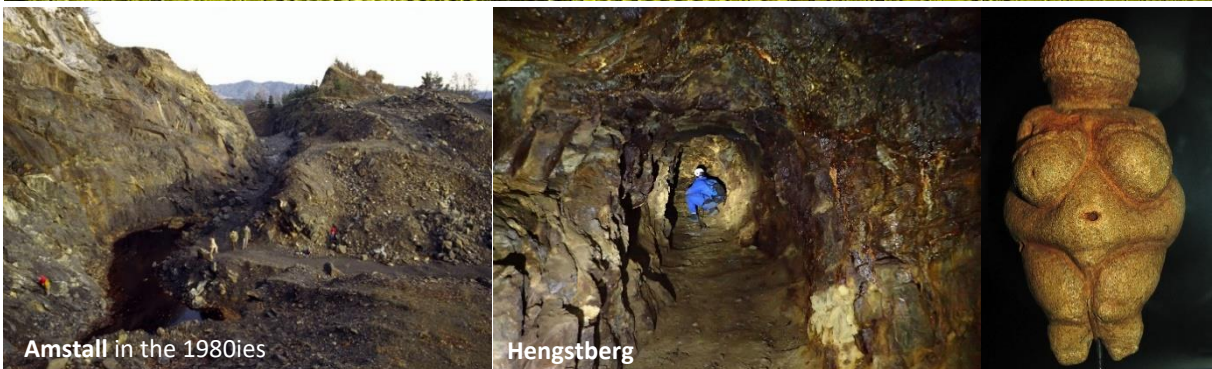
**Posters** (preliminary list)

- **Occurrence of graphite in Serbia**  
Jelena Kokot, Svetlana Simić, Vesna Tahov, Predrag Mijatović, *Geological Survey of Serbia*
- **The processability of Czech graphite raw materials**  
Michal Poňavič, *Czech Geological Survey*
- **Corundum (var. ruby) in graphitic gneiss from the graphite mining district of Amstall (Bohemian Massif, Lower Austria): geochemical and mineralogical characterization**  
Ferdinand J. Hampl <sup>(1)</sup>, Viktor Bertrandsson Erlandsson <sup>(1)</sup>, Annika Geringer <sup>(2)</sup>, Monika M. Feichter <sup>(1)</sup>, & Ronald J. Bakker <sup>(1)</sup>, (1) *Montanuniversität Leoben*; (2) *GeoSphere Austria*
- **Reinvestigation of the mineralogy of graphite deposits and occurrences in the Bohemian Massif of Lower Austria**  
Uwe Kolitsch, *Naturhistorisches Museum, Wien*

*Excursion (Friday, 16. May 2025)*

Graphite mineralization of the Southern Bohemian Massif and the Wachau valley (UNESCO world heritage landscape)

- Amstall graphite open pit (abandoned)
- Hengstberg graphite underground shaft (abandoned)
- Regional geology stops (southern Drosendorf nappe system)
- „Venus von Willendorf“ site and exhibition visit



Logistics: bring robust boots, all weather clothes (also for narrow, dry underground visit), and if possible hardhat and flashlight (limited number to share will be provided).

Departing Neulinggasse 38, Vienna: 8:30

Back at Neulinggasse 38, Vienna: 19:00

Further details to be communicated at the Symposium.

Please register for the excursion via [wienerrohstofftag@geosphere.at](mailto:wienerrohstofftag@geosphere.at) by 25. April 2025.

*The excursion is free of charge but limited to 20 persons. Preferences will given to those who indicated their interest at the symposium registration, and who are presenting at the symposium.*

The “Wiener Rohstofftag” is a thematically dedicated symposium that brings together members of research organizations, geological surveys, government, industry, NGO, and mining stakeholders, as well as students and the interested public.

The 2025 focus is the critical raw material *graphite*. Special topics include: *geology of graphite deposits, methods and case studies of graphite exploration, social licence to opere, global graphite demand / supply.*